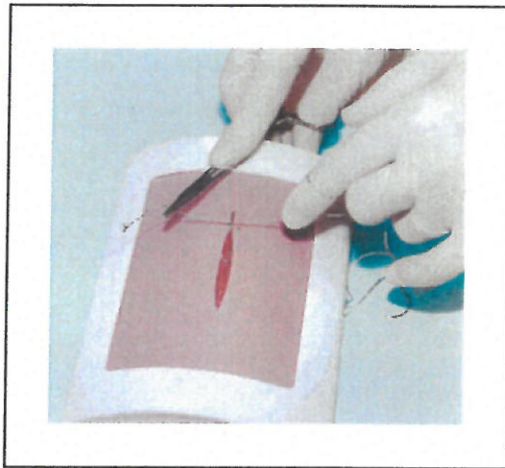


INSTRUCTIONS

Intradermal Skin Suture Pad

SSP005 SKIN JIG
SSP004 REPLACEMENT SKIN PAD



This multi-functional pad can be used to demonstrate adhesive appliances such as surgical zips as used in wound closure or as a suture practice pad. It has a realistic subdermis (red layer) and a fatty (yellow layer) and is ideal for suture practice.

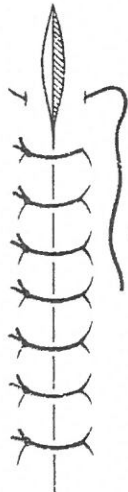
**Double the value with
Double-sided skin pads simply
turn over and start again,**

Pharmabotics Ltd
MEDICAL MODEL MAKERS

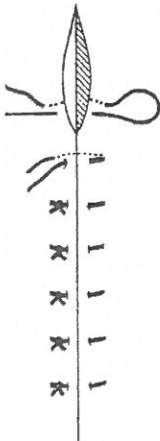
Suturing & Knotting Skills

Suturing is essential for the reconstruction and or repair of incised or damaged tissues. The appropriate selection and use of a suture material should be dependent on the procedure and the tissues involved. This should also be consistent with the principals that promote wound healing.

Suturing Techniques



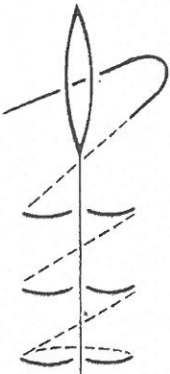
Simple interrupted – The standard all-purpose suture, which provides a secure closure for most wounds.



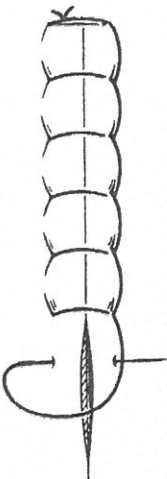
Interrupted vertical mattress – Used where a more accurate wound approximation is required.



Continuous running – A quick all purpose method for efficient wound closure.



Continuous mattress – A rapid and efficient technique which provides good cosmesis.



Continuous Blanket – An interlocking stitch, which is knotted at each end. Generally used where haemostasis is required.



Subcuticular – Placed in the subcutaneous tissue and parallel to the wound edge. Provides excellent cosmetic results.

Knotting

Knotting is critical to a good suturing technique and dependant on the type of material being used. The knot must be placed without compromising the suture material. Knots can be tied either using fingers or with the assistance of instruments.



Knotting Techniques

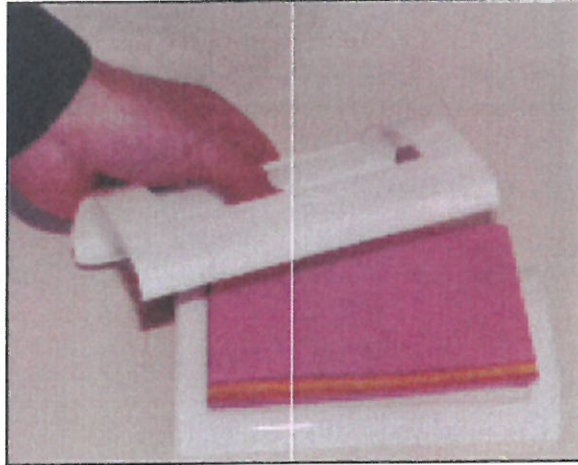
Square Knot – The easiest and most reliable for use with most suture materials. This knot should be performed, where possible using two hands.

Surgeons Knot – Recommended for tying most suture materials. It can be adapted dependant on the type of suture material used.

Instrument Tie – Used when one or both ends of the suture material are short. Care must be taken not to damage the suture when using this technique.

There is sufficient 2-way stretch to manage most dog-turns or odd sided incisions making this versatile product even more suitable, for advanced suture training.

CAUTION: Always refer to the suture manufactures guidelines before using suture materials.



To change the skin pad: Turn the jig over, tuck fingers around casing and pull outwards at the same time pressing with the thumbs on the skin pad. This releases the base of the jig. Either turn the pad over or replace with a new one.

To reassemble: expand casing with both hands and place back over base unit.

Pharmabotics Ltd
MEDICAL MODEL MAKERS

Manufactured by:
Pharmabotics Ltd. 20 The Calvert Centre,
Woodmancott, Winchester,
Hampshire, S021 3BN, England, UK.

Tel: +44 (0) 1256 398003
Fax: +44 (0) 1256 398752
www.pharmabotics.com